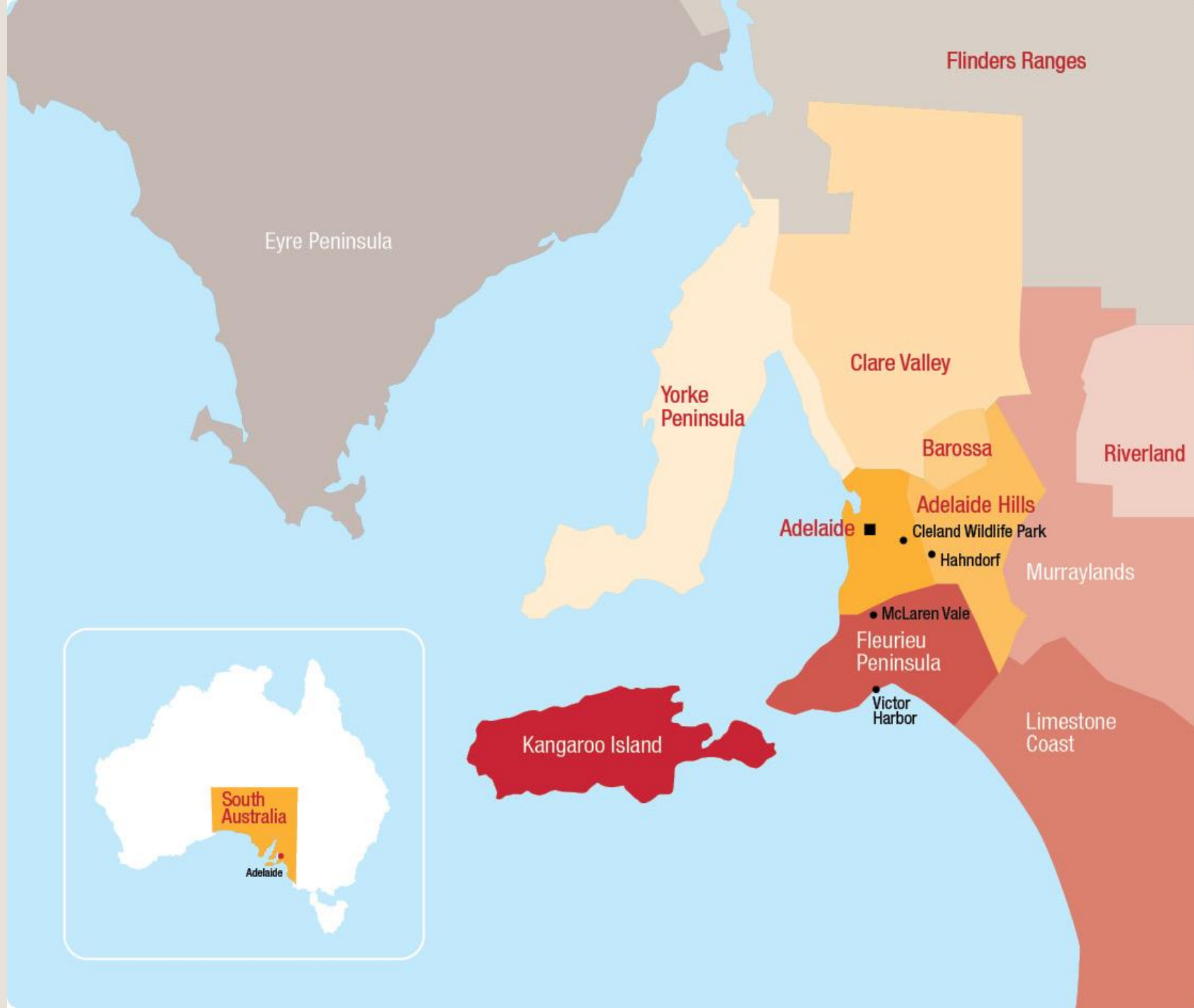


A wide landscape of South Australia at dusk or dawn. The foreground is a dark, forested valley with a winding road. In the middle ground, a range of mountains is silhouetted against a bright, low sun. The sky is a deep blue, filled with numerous stars, suggesting a clear night or twilight. The overall scene is serene and majestic.

What's new in
SOUTH AUSTRALIA?



ADELAIDE



EOS by SKYCITY

Riverbank, North Terrace

ROOMS: 120 Luxury rooms

DETAILS:

- 5-star luxury hotel
 - 12 storeys
 - VIP suites
 - 4 new restaurants
 - 2 new bars including rooftop Sol Bar & Restaurant
 - Experiences: spa treatments, in-room personal cocktail mixologist, unpacking service
 - Roof top pool
-

OPENED: December 2020





OVAL HOTEL

War Memorial Drive

ROOMS: 138 rooms

DETAILS:

- 6 storeys located as part of the Eastern Stand.
- All rooms face East and view the parklands and cathedral
- Welcome drink on arrival
- Five Regions restaurant – open for dinner and showcases five South Australian wine regins
- Bespoke Wine Bar & Kitchen – more casual fare but with focus on local

OPENED: September 2020

CROWNE PLAZA HOTEL

Frome Street

ROOMS: 329 Luxury rooms

DETAILS:

- Adelaide's tallest building with 34 storeys (hotel is from Levels 1 - 20)
 - Floor to ceiling windows in rooms with views overlooking the city and parklands
 - Outdoor heated infinity pool
 - Koomo restaurant – modern Japanese
 - Rooftop bar on Level 10
-

OPENED: November 2020





HOTEL INDIGO ADELAIDE MARKETS

Market Street (near Central Market)

ROOMS: 137 boutique rooms

DETAILS:

- First Hotel Indigo in Australia
 - 16 storeys
 - Gym and roof top pool
 - Rooftop raw food bar 'Merrymaker' offering local seafood and drinks
 - Ground floor modern Australian restaurant 'Market & Meander Bar and Eatery' with multicultural flavour
 - Rooms with modern colour palette and reflect diversity around the Markets.
-

OPENED: February 2021

MAJESTIC M SUITES NORTH ADELAIDE

200 Tynte Street (next to Wellington Square)

ROOMS: 91 suites

DETAILS:

- One, two and three bedroom suites
- 6 storeys
- Full kitchen facilities
- Ground floor suites feature a private terrace, whilst other storeys have a balcony
- Higher floors with views to Adelaide CBD

OPENED: February 2021



DOOR TO DOOR CHAUFFEURS

- Transfers, day trips, sightseeing & private touring
 - Luxury chauffeur driven vehicles
 - Pax: 1 – 25
 - Jaguar XF to Mercedes Sprinter to Fuso 25 seater
-



DOLPHIN SANCTUARY KAYAK TOURS

Garden Island

- Guided or self-guided tours through Adelaide Dolphin Sanctuary (a dedicated marine park with approximately 30 resident dolphins)
 - Transfers available from Adelaide CBD or Glenelg (additional cost)
 - Minimum 7 years of age
 - 3-hour duration
-



EARTH ADVENTURE

- Adelaide City Kayak Tour
 - 90 minute guided tour of River Torrens
 - Saturday and Sundays departure
 - Rock Climbing & Abseiling
 - Onkaparinga Gorge National Park & Morialta Conservation Park
 - Great for wildlife encounters
 - Mt Lofty Adventure Hub
 - Woodhouse in the Adelaide Hills
 - Zipline, Adventure Tower
-



TREECLIMB

- Australia's first inner-city Aerial Adventure Park
- progressively challenging obstacle courses
- Grand Course consists of 52 challenges over 2 hours
- Kids course is 21 challenges over 80 minutes
- Climbers to be min. 100cm tall
- Safety training included



ECOCADDY



- Sit back and let ecocaddy guide you around some hidden pockets of Adelaide
 - 90 minute tours
 - 8 – 12km travelled
- Adelaide City Sights & History Experience
 - Discover Adelaide's must see neighbourhoods, iconic buildings & fascinating history
- Street Art Green Adventure
 - See Adelaide's street art and parks

An aerial photograph of a golf course in the Adelaide Hills, Australia, during autumn. The landscape is filled with trees in various shades of green, yellow, orange, and red. A winding path or road cuts through the center of the course, and a large body of water is visible on the left side. The overall scene is lush and scenic.

ADELAIDE HILLS



SOUTH
AUSTRALIA



MT LOFTY HOUSE & SEQUOIA

- Located down the road from Mount Lofty Summit
 - Overlooking Piccadilly Valley
 - Mt Lofty House rooms recently refurbished
 - Hardy's Verandah Restaurant
 - Cottages also available for families/smaller groups
 - 14 x 6-star Sequoia Villas opened April 2021. Private club lounge area, daily drinks & tasting plate, complimentary welcome drinks and limited mini bar
-

PAVILIONS AT LENSWOOD

- 2 x One-Bedroom self-contained pavilions
 - 1 inspired by modern Italian Alps and the other on a Swiss chalet design
 - Each pavilion has over 50m² living space with an open wood fire, freestanding bath and king bed
 - 30 minutes from Adelaide CBD
-





THE STIRLING HOTEL

- 5 full appointed accommodation suites
 - All with opulent en-suite bathrooms – one even has its own steam room
 - Each suite is individually furnished
 - Three suites feature their own gas fireplace
 - Upstairs from The Stirling Hotel (pub) which has its own gin bar
-

JURLIQUE FARM

- 90 minute tour of Jurlique Farm in Hahndorf
 - Operates Monday – Friday at 10am
 - Behind the scenes tour of their biodynamic farm
 - Learn about the nature and science behind their skin care product
 - \$30 per person
 - VIP tour available including transfers and spa treatment (\$285 per person)
-



BAROSSA



SOUTH
AUSTRALIA



LE MAS BAROSSA

- 4 rooms, each thoughtfully curated and woven with French touches
 - Located next to grenache vineyards and 4km to Jacob's Creek, St Hugo and Rockford
 - Heated mineral pool surrounded by lush lawns
-

BAROSSA BALLOON ADVENTURES

- Sunrise Flight (RRP \$330pp)
 - Barossa breakfast after the flight
 - Allow 5 hours (1 hour flight)
 - Departs from Nuriootpa
-





BAROSSA HELICOPTERS

- A variety of tours and experiences from private charters to scenic tours to luxurious food and wine experiences
 - Depart from near Lyndoch
 - All flights are 2 – 3 people
 - Lead-in tour: ‘A Taste of Flight’, 4 minute scenic flight RRP \$80 (two people)
-

SEGWAY SENSATION SA

- Segway tour around Seppeltsfield Winery includes behind the scenes access
- Tour goes past the heritage listed sites, vineyards and tranquil gardens
- Operates weekends and public holidays
- One-hour duration plus training



TOUR OPERATORS

Contracted tour operators:

- Small Batch Wine Tours
- A Taste of South Australia
- Adelaide Sightseeing
- Taste the Barossa

• Uncontracted tour operators:

- Getaways SA
- Barossa Taste Sensations
- Barossa Unique Tours
- Coast & Co (Barossa Overnight Tour)
- Tour de Vines (self-guided cycling tours)



CLARE VALLEY





NEAGLES RETREAT

- 4 x stunning villas; each two bedroom and two bathroom
 - Flexible bedding configurations (either King or 2 x extra-long singles)
 - Set on 75 acre property with 5 acres of Riesling vineyards
 - Gas log fire and private balconies
 - Full kitchen facilities
-

PINK LAKE TINY HOUSE

- Uniquely crated, hand-built, eco-friendly tiny house
- Located directly across iconic pink salt lake, Lake Bumbunga
- Fully self-contained and off-the-grid
- Two loft bedrooms with authentic Japanese futons
- 1.5hr north of Adelaide





WINERIES

- Wineries with commissionable experiences:
 - Jim Barry Wines
 - Kilikanoon Wines
 - Knappstein Wines
 - Mitchell Wines
 - Mr Mick
 - Pikes Wines
 - Sussex Squire Wines
 - Tim Adam Wines
-

TOUR OPERATORS

Contracted tour operators:

- A Taste of South Australia

• Uncontracted tour operators:

- Clare Valley Tours
 - Clare Valley Experiences
 - Door to Door Chauffeurs
 - Getaways SA
-

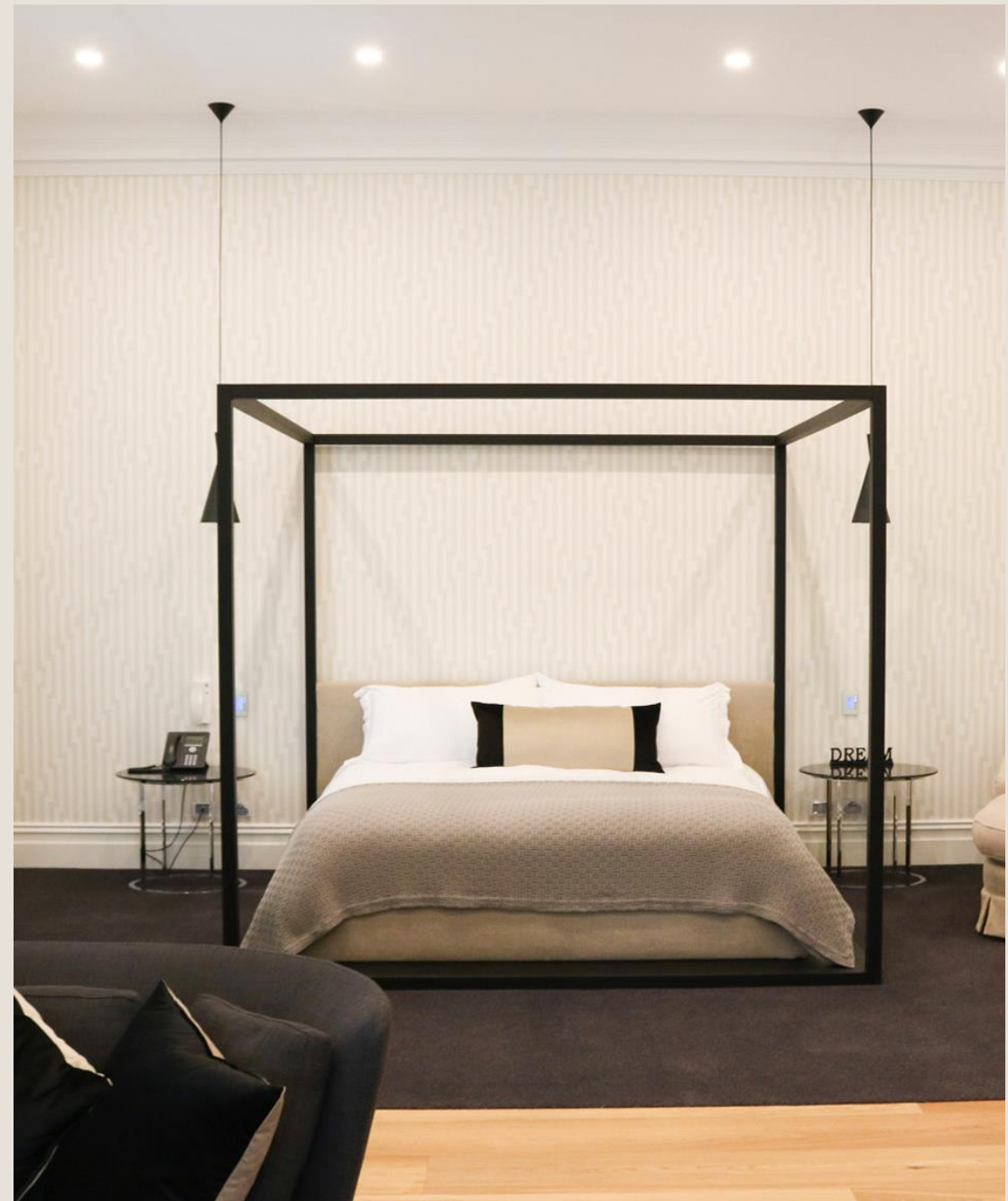


FLEURIEU PENINSULA



BERESFORD HOUSE

- Located in McLaren Vale
 - Two wings of a stunningly appointed house: The Reserve Suite and Grenache Villa
 - The Reserve Suite – ‘the ultimate lovers’ retreat’ with a four-poster bed
 - Grenache Villa – sleeps six in three double bedrooms
 - Includes bottle of wine, local produce hamper, non-alcoholic drinks in fridge and a guided wine tasting at the winery
-





COAST MOTEL & APARTMENTS

- Located on the coast in Port Noarlunga, 35km south of Adelaide CBD (10 minutes to McLaren Vale, 60 minutes to Cape Jervis for KI ferry)
 - 15 self-contained apartments – various styles from studio up to 2 bedroom family apartments
-

MCLAREN VALE GETAWAYS

- Two properties: Clements House and Hillside House.
- Clements House next door to The Currant Shed (restaurant). 3 x bedrooms with a rustic interior and spacious outdoor area.
- Hillside House within walking distance to The Currant Shed and Shottesbrooke winery. 3 x bedrooms with a modern interior, situated atop a hill overlooking vineyards.

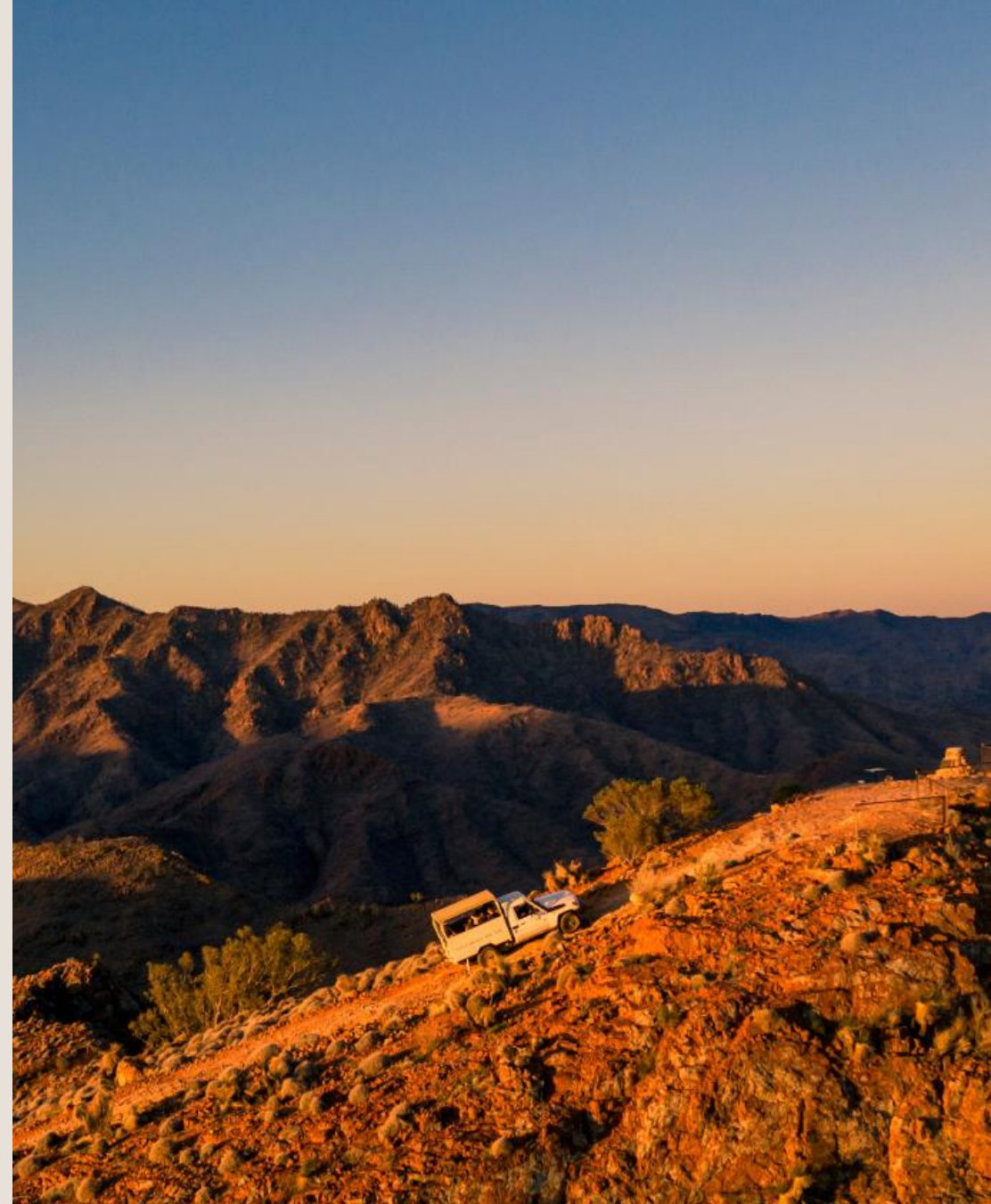


FLINDERS RANGES & OUTBACK



ARKARoola WILDERNESS SANCTUARY

- Privately owned 610km² conservation reserve
 - Northern Flinders Ranges (600km north of Adelaide)
 - Motel style accommodation (can accommodate up to 4 pax)
 - Great for stargazing, geological monuments and wildlife
 - Known for their Ridgetop Tour
-





PRAIRIE HOTEL

- Located in Parachilna in the Flinders Ranges
 - Three standards of accommodation available however all with Queen or King beds and ensuites
 - Restaurant and gallery on-site
-

EYRE PENINSULA

DECO BEACH LUXURY APARTMENTS

- 2 x apartments in a recently renovated Art Deco house. Seaview has 2 bedrooms (1 x king; 1 x tri-bunk); Garden view has 1 bedroom (1 x queen).
 - On the foreshore in Port Lincoln
 - Same owners as Tanonga Luxury Eco Lodges
-





PERLUBIE SEA ECO VILLAS

- 2 x eco-friendly villas; each catering for 2 pax (king or 2 x singles)
 - 19km from Streaky Bay (90km from Ceduna Airport)
 - Private deck, fully equipped kitchen and a deep bath tub overlooking the water
 - One night bookings accepted and is pet-friendly
-

GAWLER RANGES WILDERNESS SAFARIS

- Various touring options available including 4D/3N
‘Outback to the Sea Safari’ inc Lake Gairdner and swim
with sea lions.
- Accommodation at Kangaluna camp – glamping tents and
a central dining room
- Fantastic for wildlife and nature enthusiasts



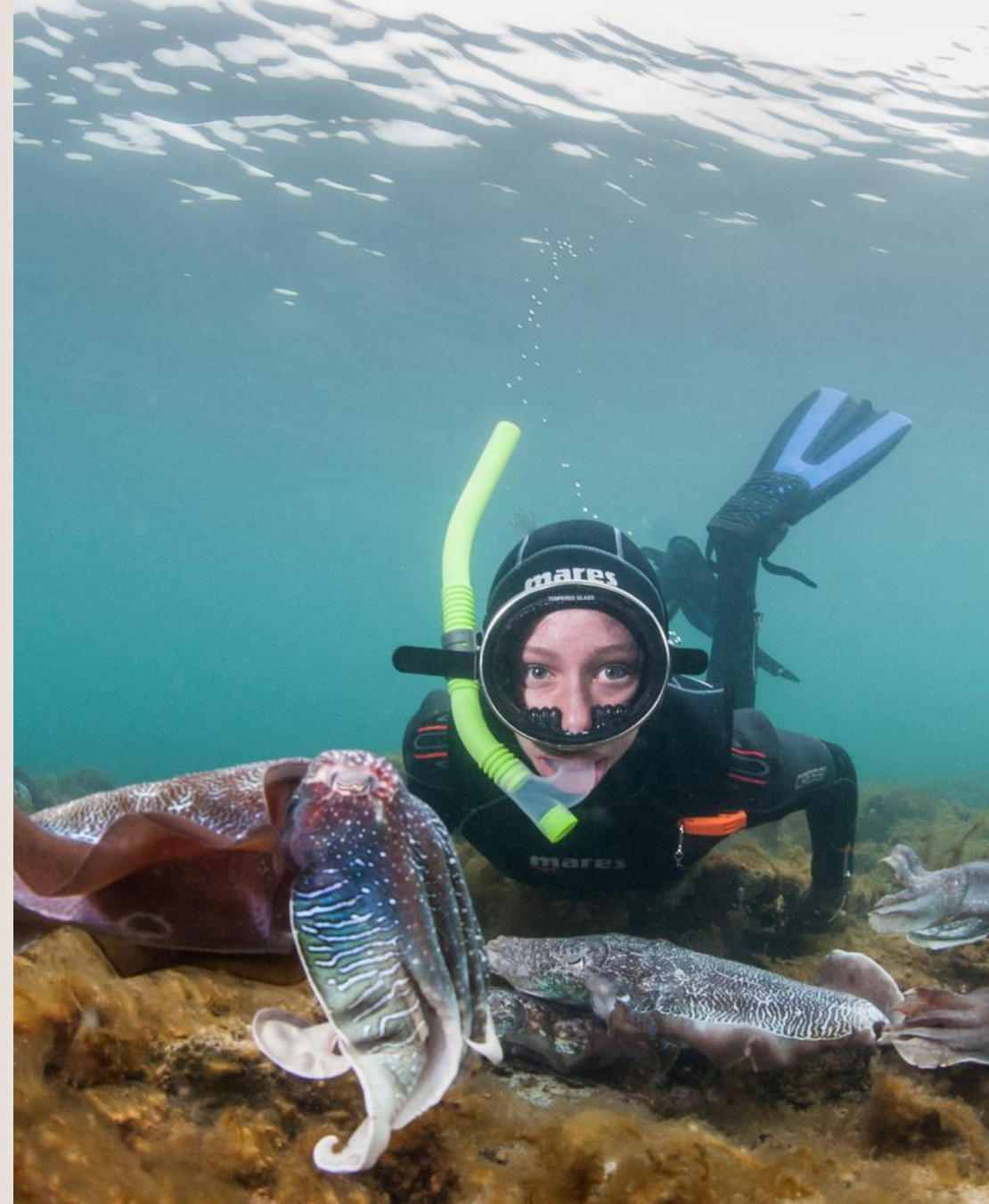


OYSTER FARM TOURS

- Participants wade out into the water
- Taste fresh oysters straight out of the water
- Have a hands-on shucking lesson
- Upgrades available to include Riesling, extra oysters or lunch
- Price: start from \$40 pp for Standard tour
- Number: Min 2 guests
- Return transfers from Port Lincoln available: \$40pp

PURESA – CUTTLFISH TOUR

- PureSA offer a 'Swim with the Giant Cuttlefish' experience
- 2 day tour ex Adelaide available (from \$690pp) or self-drive option (from \$460pp)
- Set departure dates in June – July 2021
- Includes exclusive presentation by marine expert
- Six swimmers per guide



STILLERY, RENMARK

MURRAY RIVER, LAKES AND COORONG & RIVERLAND

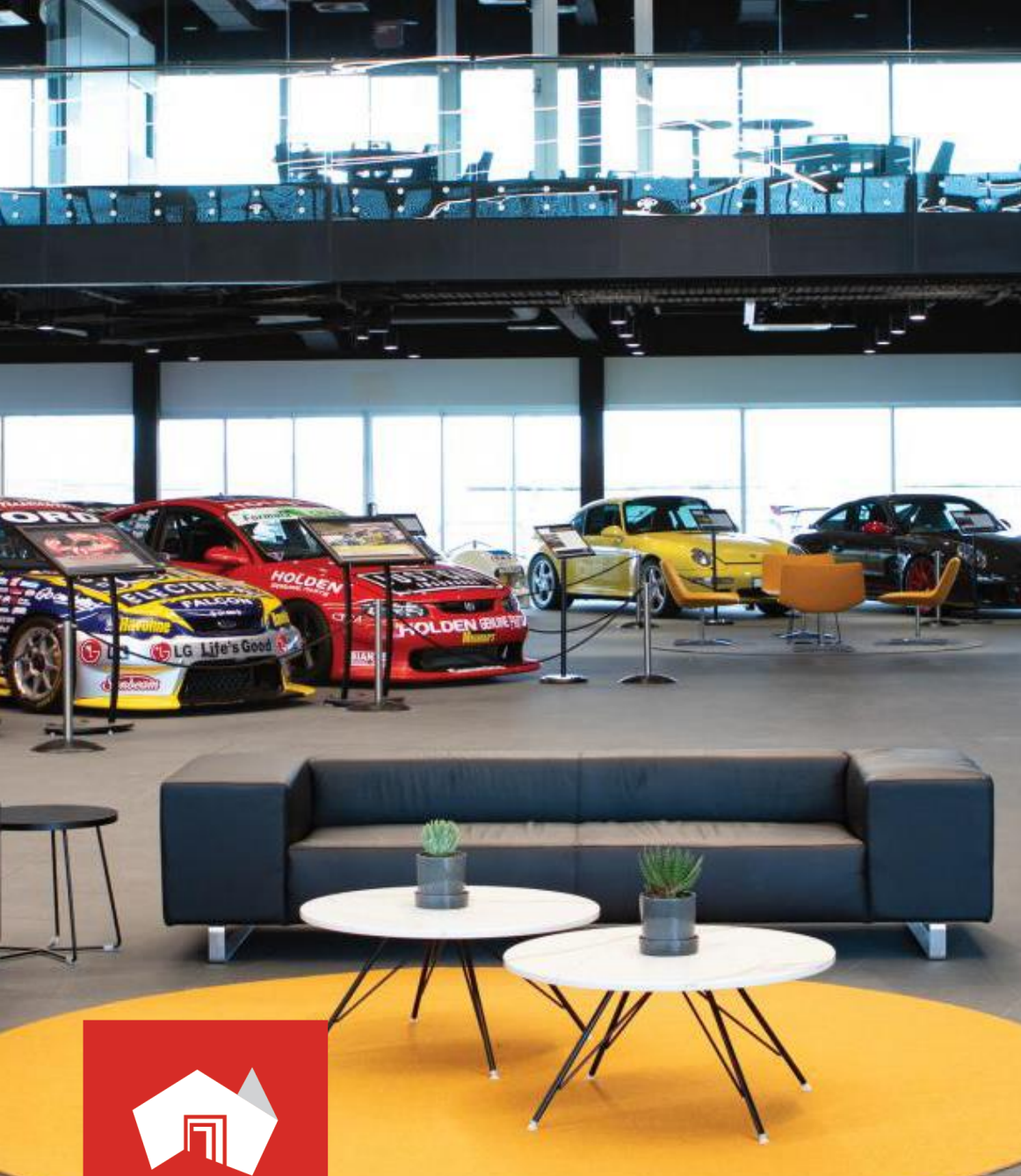
TWENTY THIRD STREET
DISTILLERY, RENMARK



WAIKERIE GOLF & COUNTRY CLUB

- Located in Waikerie in the Riverland (2 hours from Adelaide)
- 6 x suites: self-contained featuring a kitchenette and private deck.
- 6 bedroom villa (separate to the suites): outdoor courtyard dining and open plan living.





RYDGES PIT LANE HOTEL

- Located at The Bend at Tailem Bend, 85km from Adelaide
 - The Bend is Australia's newest world-class motorsports facility
 - Rydges Pit Lane Hotel (4-stars) on site with 100 guest rooms, many overlooking the racing circuit
 - Restaurant on-site
-

JUGGLE HOUSE EXPERIENCES

- Specialises in day tours for houseboats and river homes
 - Tours around Adelaide Hills, Barossa & Langhorne Creek
 - New tour: Monarto Wild Gin
 - Accommodation & airport transfers
 - Tours operate in a luxurious Mercedes Sprinter with 11 seats
-





CANOE THE COORONG

- Experience Coorong National Park, 85km south of Adelaide
 - Tours are all inclusive (catering & equipment), suitable for all ages and skill levels
 - Allows a more intimate experience with the wildlife of the Coorong
-

MURRAY RIVER TRAILS

- Murray River Walk: 4-day / 3-night guided tour; small-groups (4 – 10 guests); nightly accommodation onboard a houseboat; all-inclusive
- Murray River Safari: 3 days / 2 night guided tour; focus on diverse wildlife and soft-adventure (canoeing)
- Both Walk & Safari are all-inclusive and small groups (4 – 10 guests). Accommodation each night is onboard a houseboat.
- Murray River Escape: tailored houseboat holidays for private groups; 3 – 7 nights; from \$150pp per day



KANGAROO ISLAND



NEW KI ACCOMMODATION

- Antechamber Bay Retreats – two stylish retreats
- Ecopia Retreat – three luxury bespoke villas
- Hamilton and Dune – two stylish homes
- Hanson Bay Cabins – six self-contained beachside cabins
- Oceanview Eco Villas – 2 x 2 bedroom villas
- One Kangaroo Island – 5 kings rooms booked exclusively
- Stowaway Kangaroo Island – 2 x couples retreats



KANGAROO ISLAND | ACCOMMODATION



Stowaway Kangaroo Island



Hamilton and Dune



Oceanview Eco Villas



One Kangaroo Island

Antechamber Bay Retreats

Hanson Bay Cabins



Ecopia Retreat



KI WILDERNESS TRAIL

- Significantly damaged during the bushfires
 - ‘Fire Recovery Experience’ – modified walk has reopened for guests with licensed tour operators
 - See the beauty of regenerating plants and wildlife
-



LIMESTONE COAST



COONAWARRA EXPERIENCES

- Tours
 - Immerse Yourself in Coonawarra
 - ½ day: 10.30-5PM inc Lunch
 - Choice of wineries – eg Wynns, Parker Estate, Redman Wines, Coonawarra Siding
 - Coonawarra Highlights
 - ½ day 12.30-4.30pm inc Lunch
 - Choice of wineries – eg Wynns, Parker Estate, Redman Wines, Coonawarra Siding
 - Accommodation:
 - Two bedroom
-



THE HENTY

- Motel style accommodation in Mount Gambier
 - 42 rooms and suites suitable for families or couples
 - Indoor swimming pool and licensed restaurant and bar.
-





DELGATTIE ESTATE

- Established in 1902 and now a luxuriously restored boutique hotel.
 - Three individually designed guest suites
 - Each with own ensuite, sitting room and private access
 - In Mount Gambier
-



ADELAIDE
SOUTH AUSTRALIA